

Spatial and temporal patterns of pesticide concentrations in streamflow, drainage and runoff in a small Swedish agricultural catchment

Maria Sandin, Nicholas Jarvis, Kristin Piikki, Mats Larsbo, Kevin Bishop & Jenny Kreuger

Swedish University of Agricultural Sciences (SLU)

International Fresenius AGRO Conference, 18 June 2018



Introduction

- Transport pathways of pesticides to surface waters
 - Diffuse sources
 - Spray drift
 - Surface runoff
 - Leaching
 - Point sources

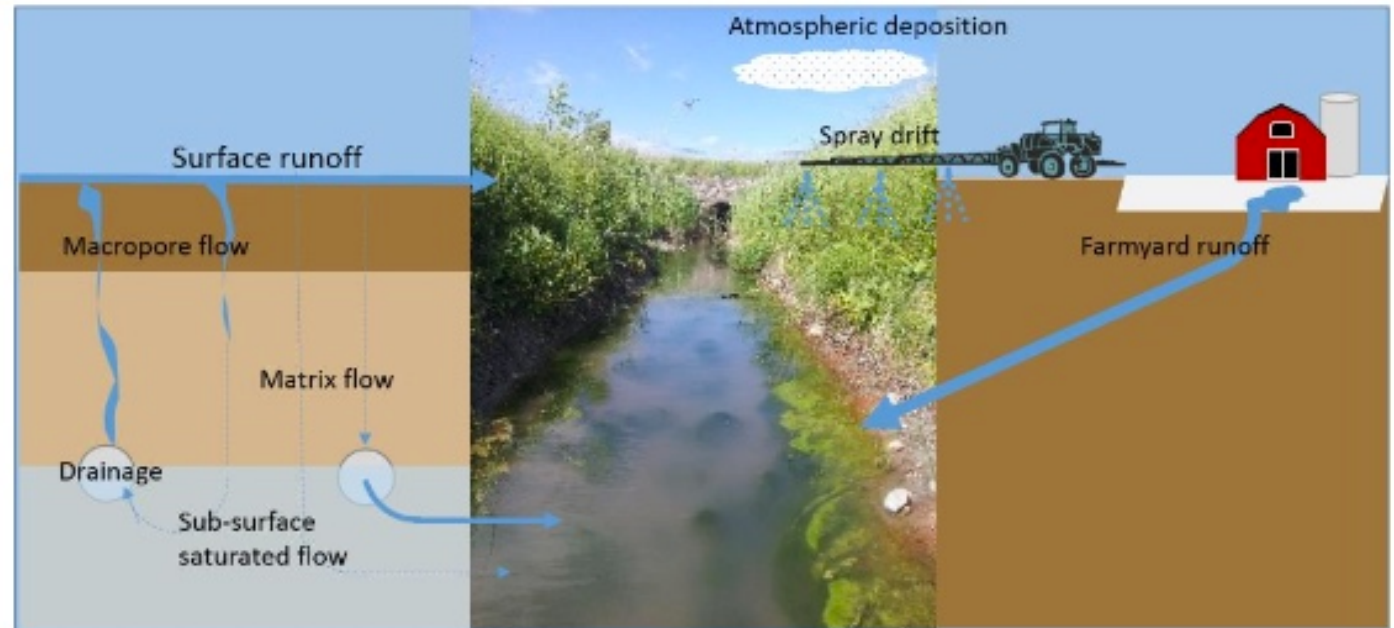
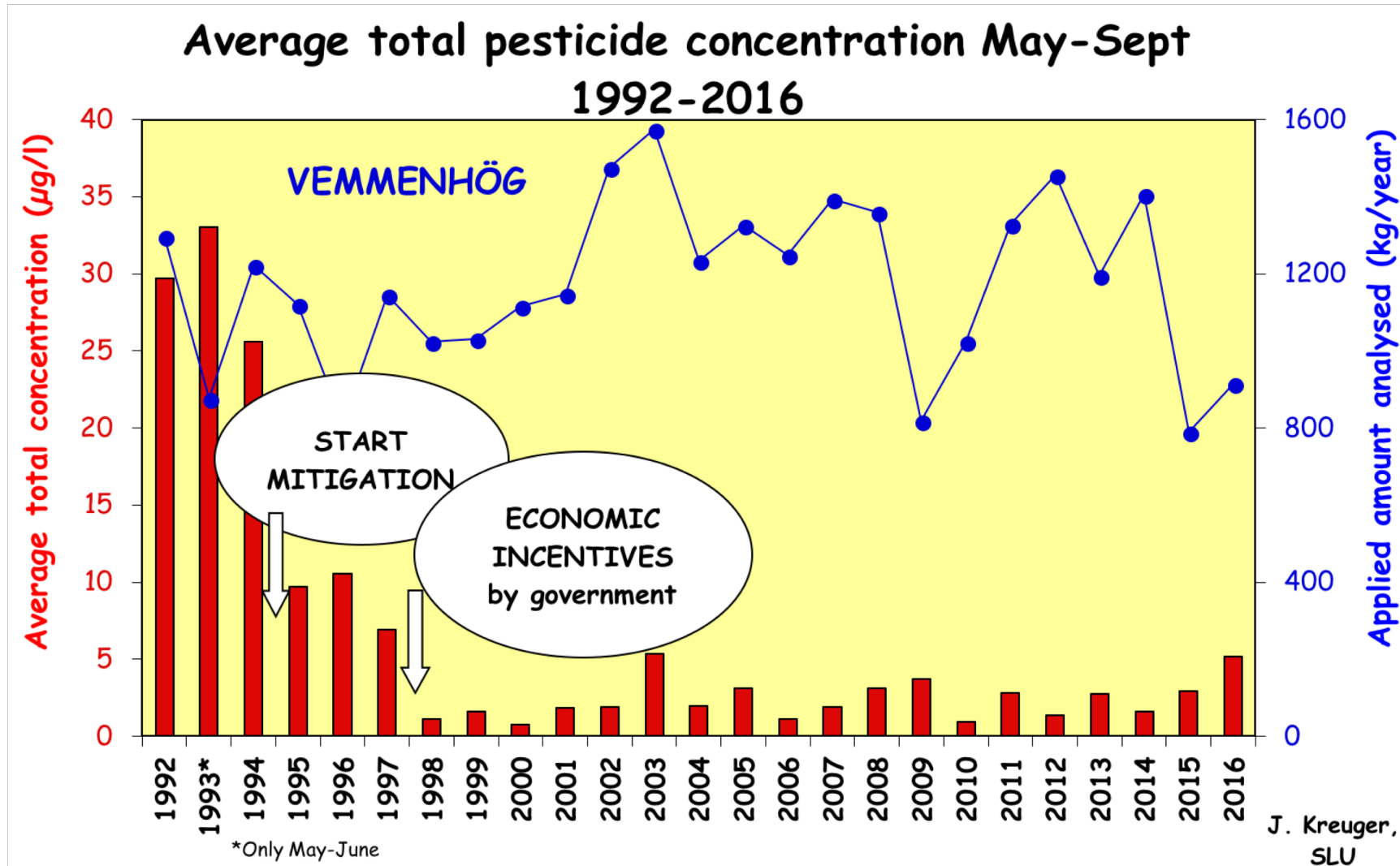


Figure from Maria Sandin thesis (2017)

Results long-term monitoring

A 90% reduction in pesticide concentrations due to minimising point sources



Study background

Diffuse losses of pesticides to surface waters often originate from small fractions of the agricultural landscape susceptible to fast flow processes, i.e. surface runoff and/or macropore flow to drains

Cost-effective mitigation requires identification of the main contributing areas and understanding of the relative importance of different transport pathways

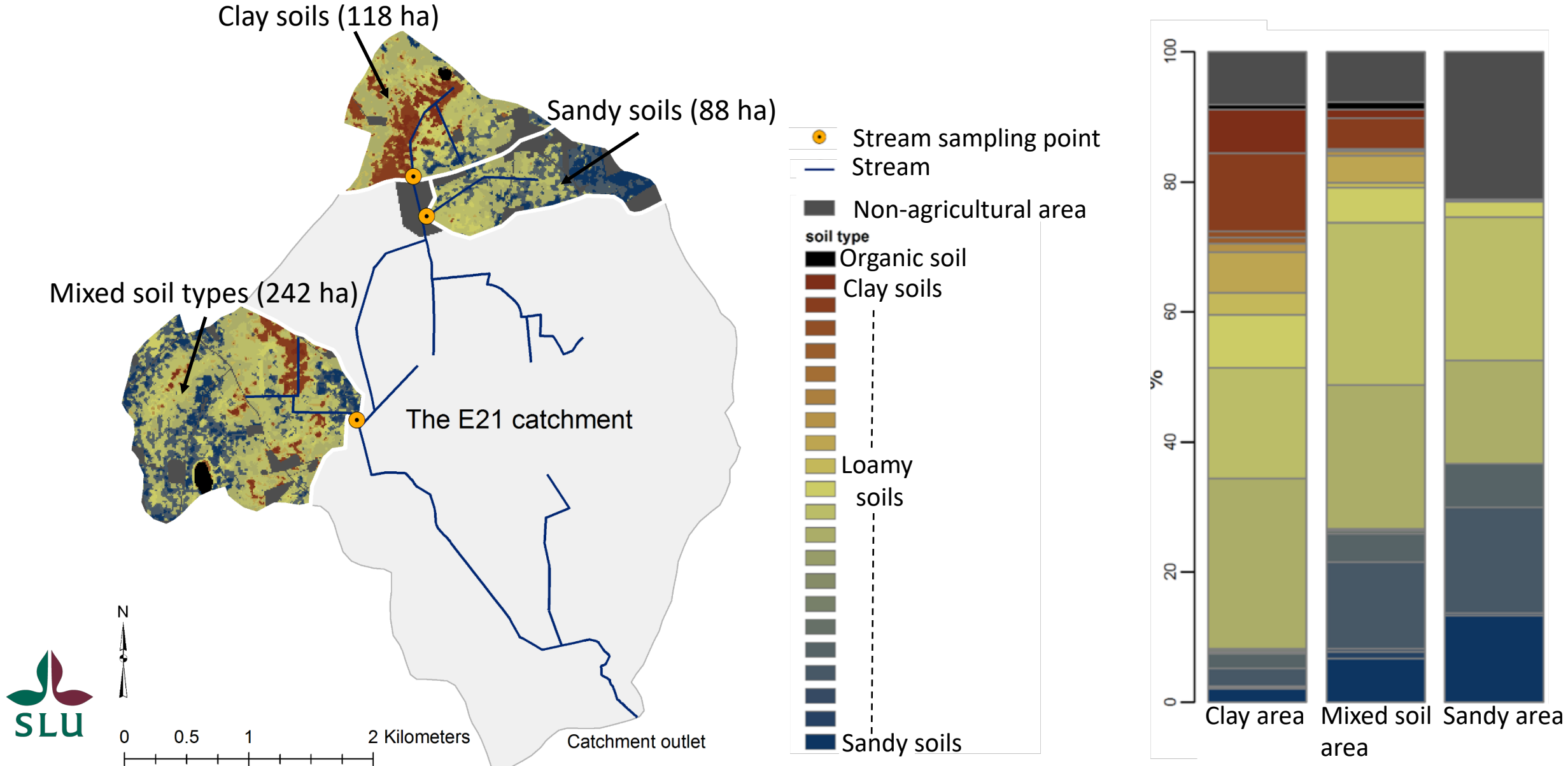
Very few studies carried out under Swedish agro-environmental conditions

Monitoring study in a small Swedish agricultural catchment:

- > **Can spatial variation in pesticide concentrations in streamflow be related to variations in soil texture?**
- > **Relative importance of surface and subsurface transport pathways?**



A small Swedish agricultural catchment with large variation in soil types



Sampling of streamflow, drainage and surface runoff

Stream



Drains



Surface runoff



- Sampling May and June 2013 – 2015
- LC-MS/MS analyses of 99 compounds
- Pesticide use data from annual farmer interviews

Main results: Pesticide occurrence in stream water

clay soils > mixed soil types >> sandy soils

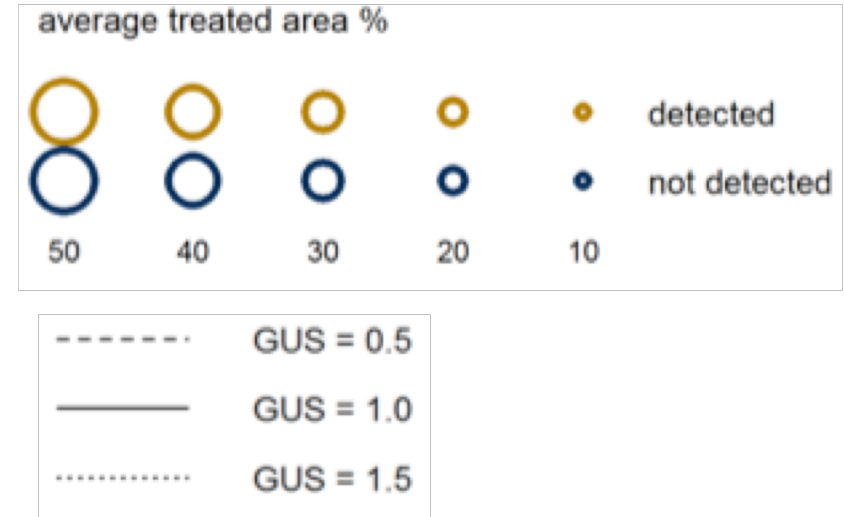
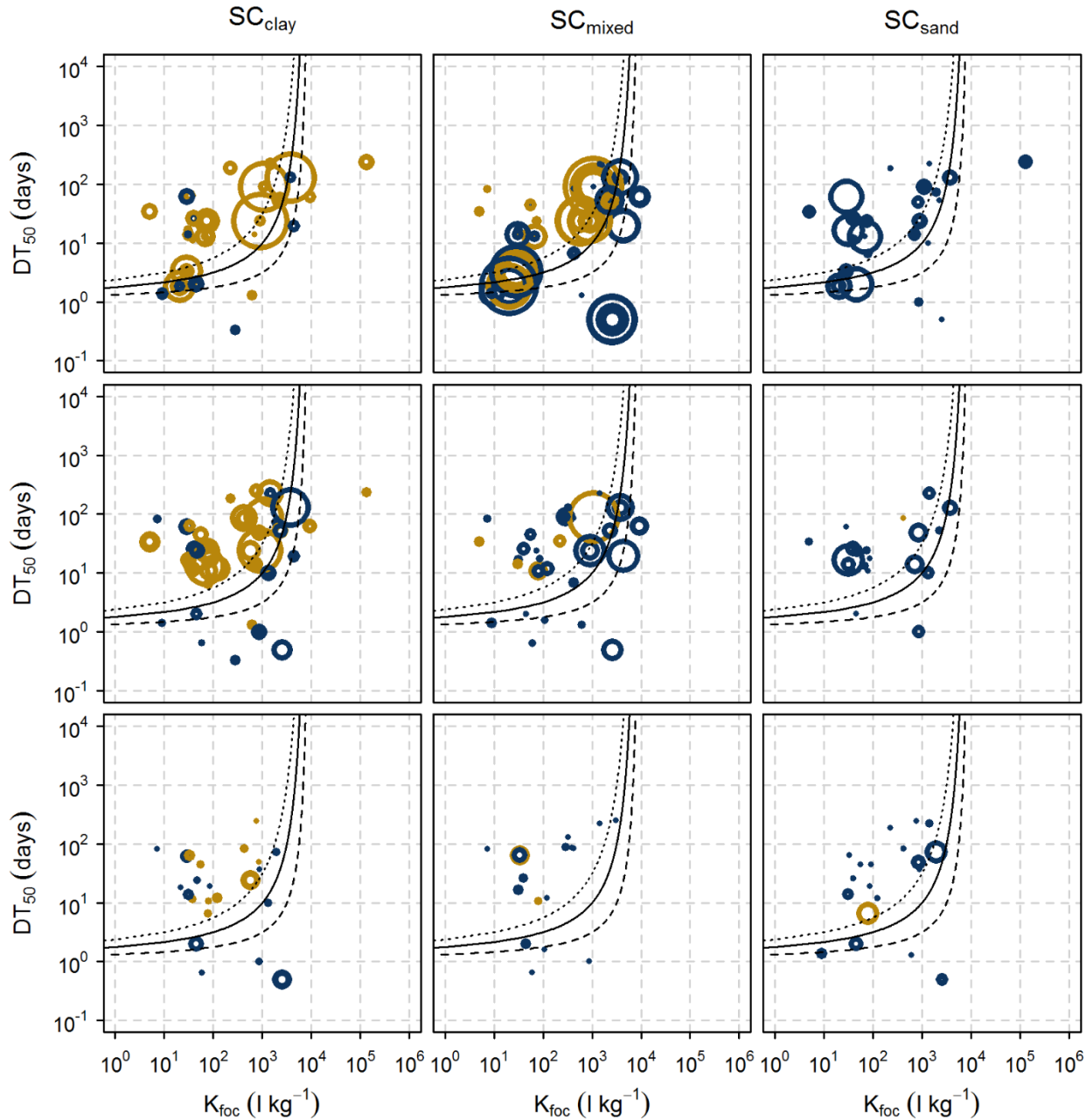
Pesticides detected in stream water

	Clay soils	Mixed soil types	Sandy soils
# compounds	30-35	9-24	1-2
Maximum concentration $\mu\text{g l}^{-1}$	0.57-55	0.10-0.88	0.002-0.003
Sum of concentrations	3.31-65.21	0.17-1.90	0.003-0.005
#compounds >WQO*	4-7	1-2	0

*Swedish national Water Quality Objectives are used to evaluate the environmental quality of surface waters

Last application:

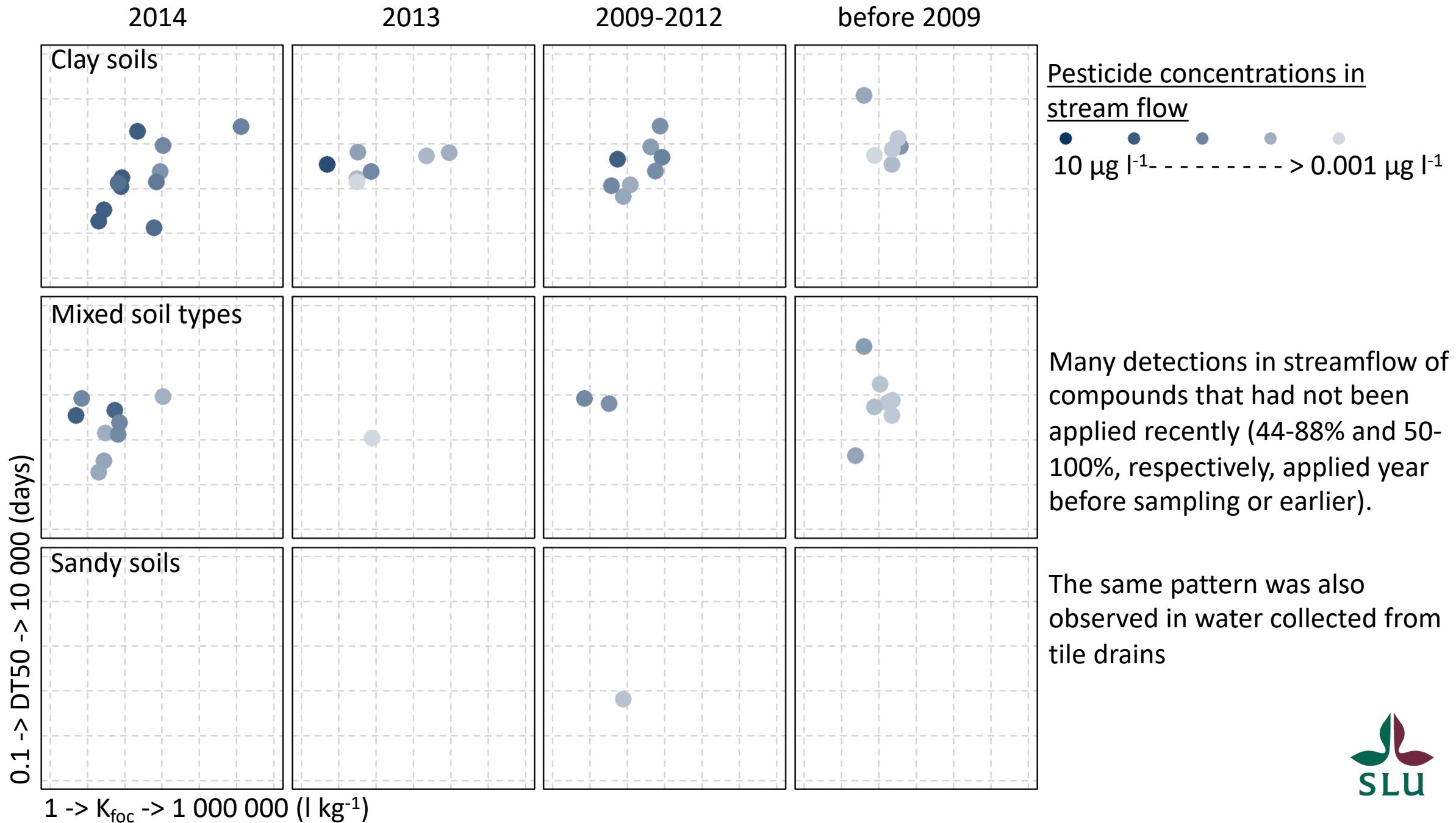
2009 - 2 years before sampling year before sampling year of sampling

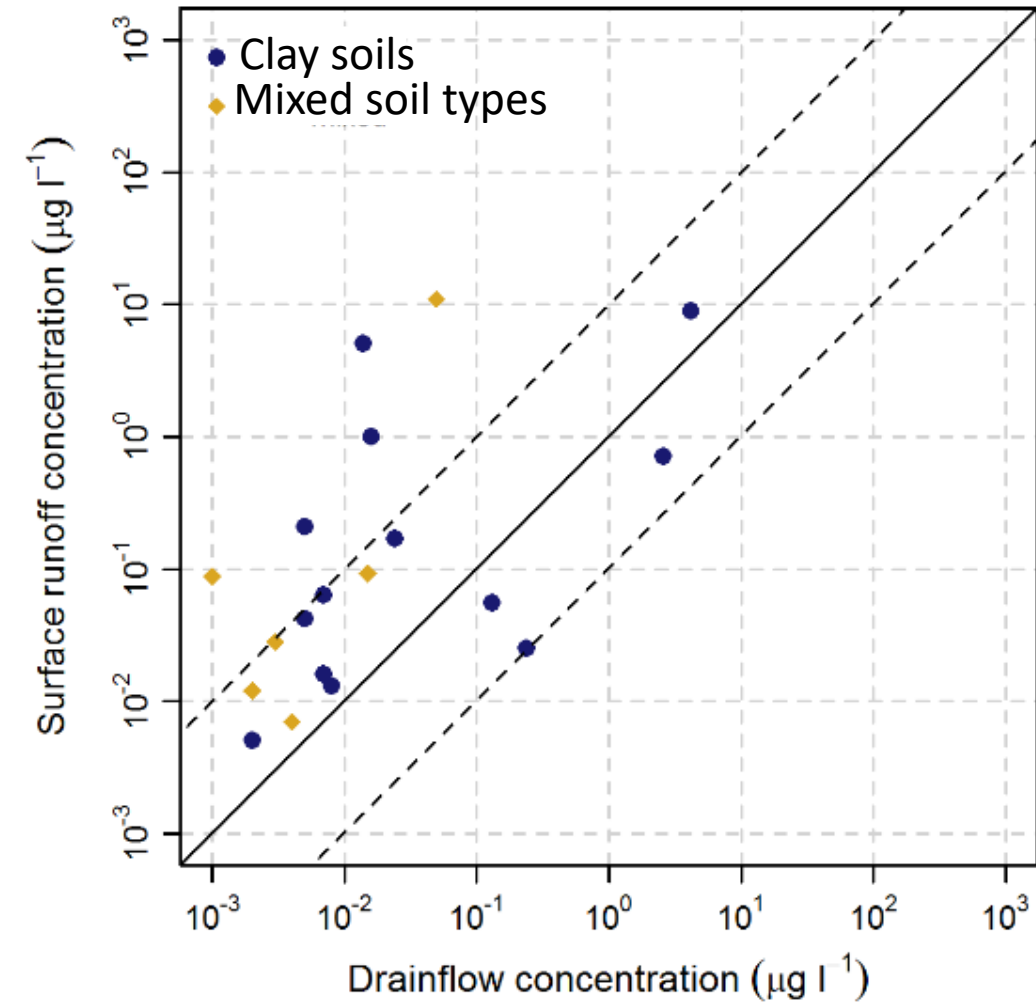


Pesticides with GUS-index above 1.5 were more frequently detected in stream flow (i.e. pesticides in the upper left of each diagram)

Also, pesticides applied on larger areas were more frequently detected. However, especially in the clay soil area also pesticides with lower GUS-index were detected (applies also to previously applied pesticides).

Last application before sampling on 14th May 2014





Pesticide concentrations larger in surface runoff than in drainage



Topography implies that surface runoff water did not reach the stream, but infiltrated locally (i.e. lack of surface connectivity)



Macropore flow to drains likely dominant transport pathway

Summary and conclusions

Clay soils>Mixed soil types>>Sandy soils

So, yes – special variation could be related to variations in soil texture

Soil texture maps, of sufficient spatial resolution, potentially useful tool

Macropore flow to drains likely dominant transport pathway

.... but transport times often long – significant storage along pathways



Read more in STOTEN vol. 610-611, 623-634 (2018)

Science of the Total Environment 610-611 (2018) 623-634



Contents lists available at ScienceDirect

Science of the Total Environment

journal homepage: www.elsevier.com/locate/scitotenv



Spatial and temporal patterns of pesticide concentrations in streamflow, drainage and runoff in a small Swedish agricultural catchment



Maria Sandin ^{a,*}, Kristin Piikki ^a, Nicholas Jarvis ^a, Mats Larsbo ^a, Kevin Bishop ^b, Jenny Kreuger ^b

^a Department of Soil and Environment, Swedish University of Agricultural Sciences, P.O. Box 7014, SE-750 07 Uppsala, Sweden

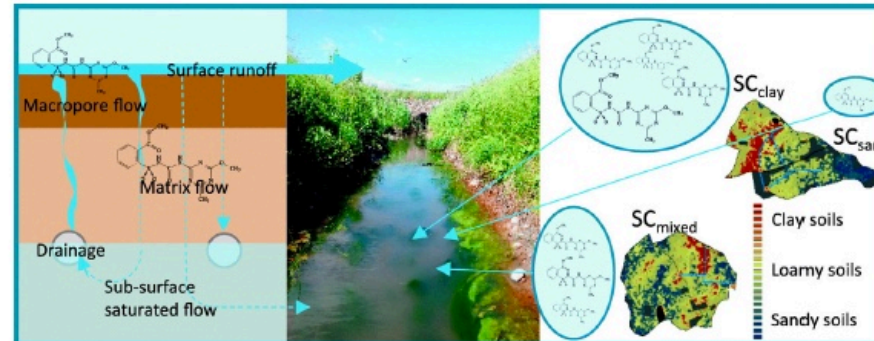
^b Department of Aquatic Sciences and Assessment, Swedish University of Agricultural Sciences, P.O. Box 7050, SE-750 07 Uppsala, Sweden

HIGHLIGHTS

- Pesticides were sampled in streams, drainage and runoff in three small sub-catchments.
- Detections were most frequent in the catchment with a large proportion of clay soils.
- Only two compounds found at small concentrations in an area dominated by coarse soils.
- The spatial pattern of detections in streamflow was consistent in three sampling years.
- Losses characterized by fast macropore flow and long-term subsoil storage of residues.

GRAPHICAL ABSTRACT

This paper investigated whether spatial variation in pesticide occurrence in the stream draining a small Swedish agricultural catchment could be related to spatial variation in soil properties, and also assessed the relative importance of surface and subsurface transport pathways.





Thank you for listening!



We thank the Swedish farmers' foundation for agricultural research (SLF) and Centre for Chemical Pesticides (CKB) for financial support

Maria's thesis: Surface and subsurface transport pathways of pesticides to surface waters (2017)
<https://pub.epsilon.slu.se/14474/>

