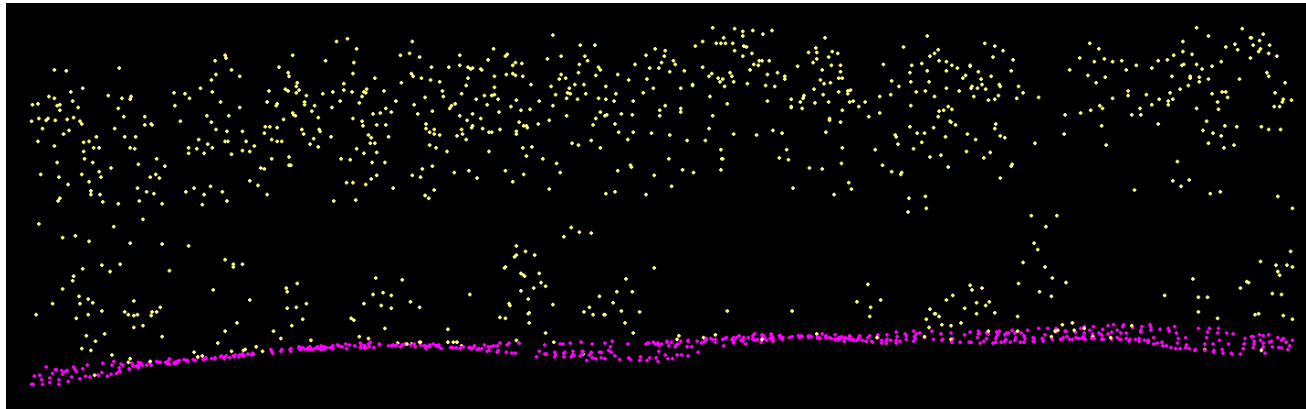


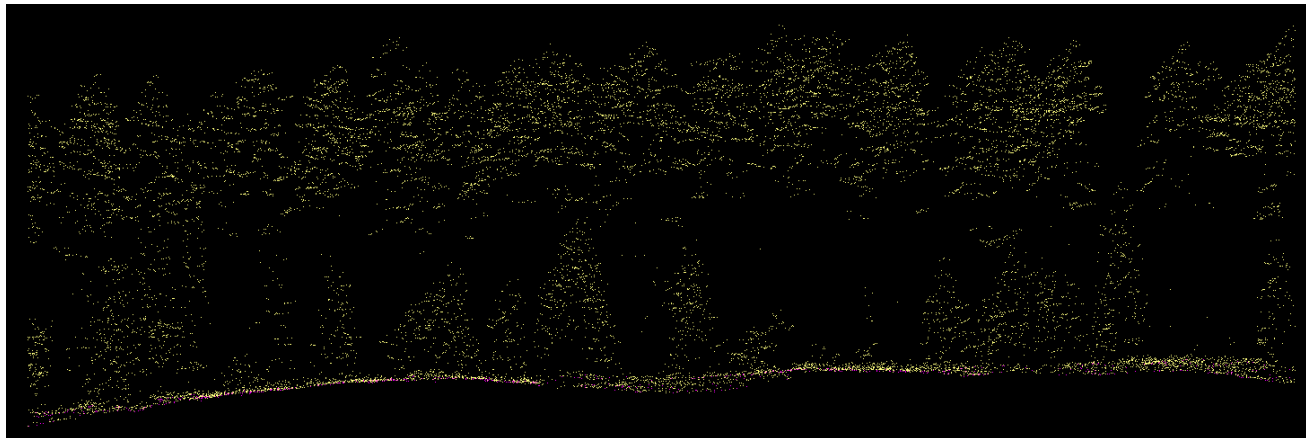
# New remote sensing methods supporting forest management planning

Financed by SCA

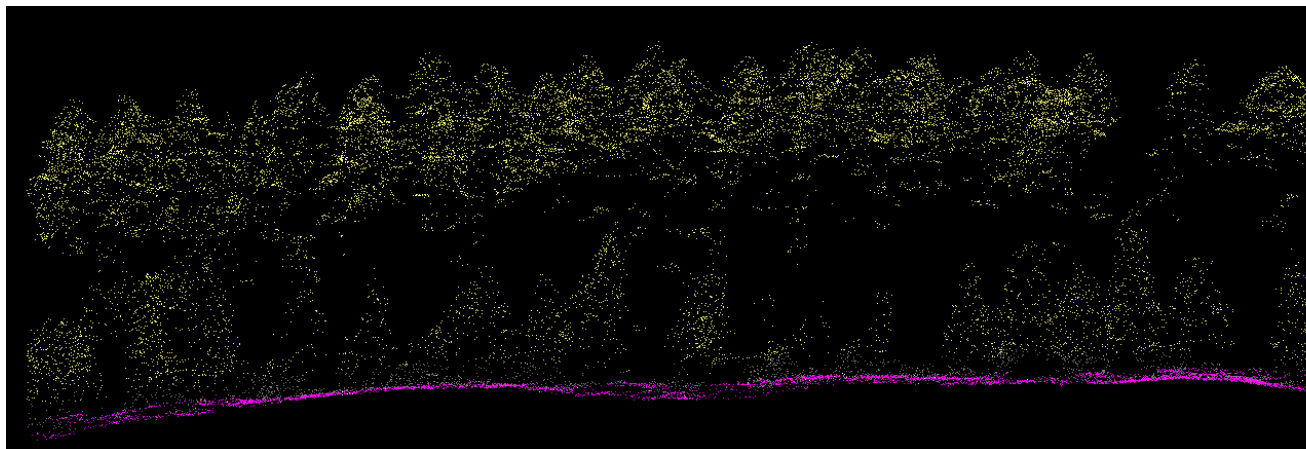
André Wästlund



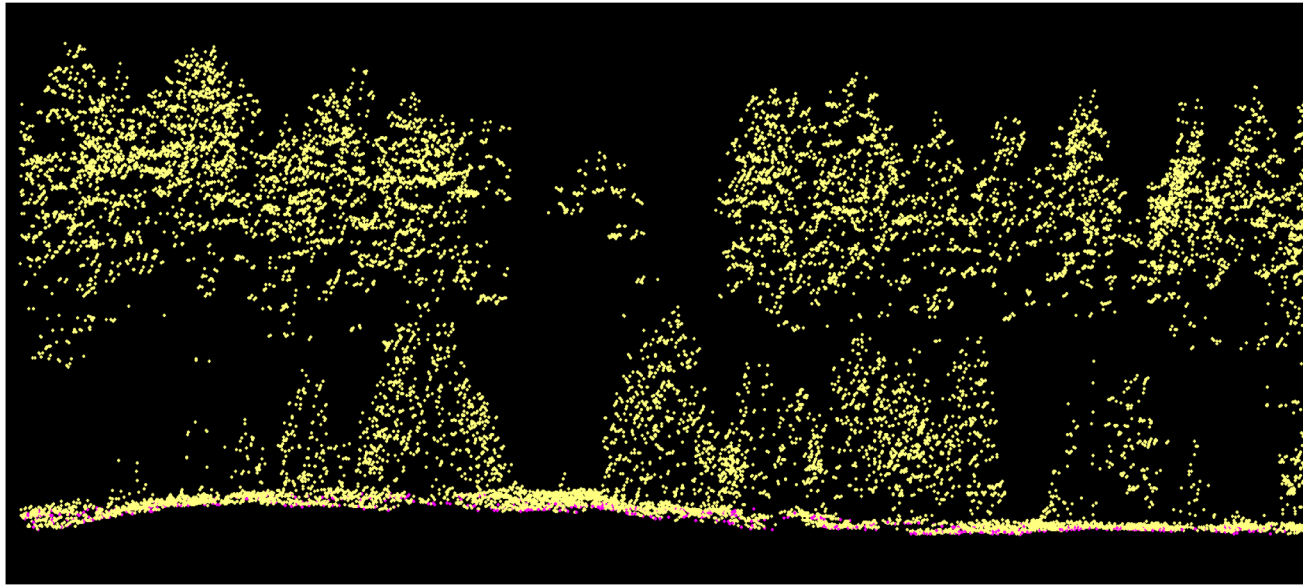
National height model  
Flight altitude: 2000 m



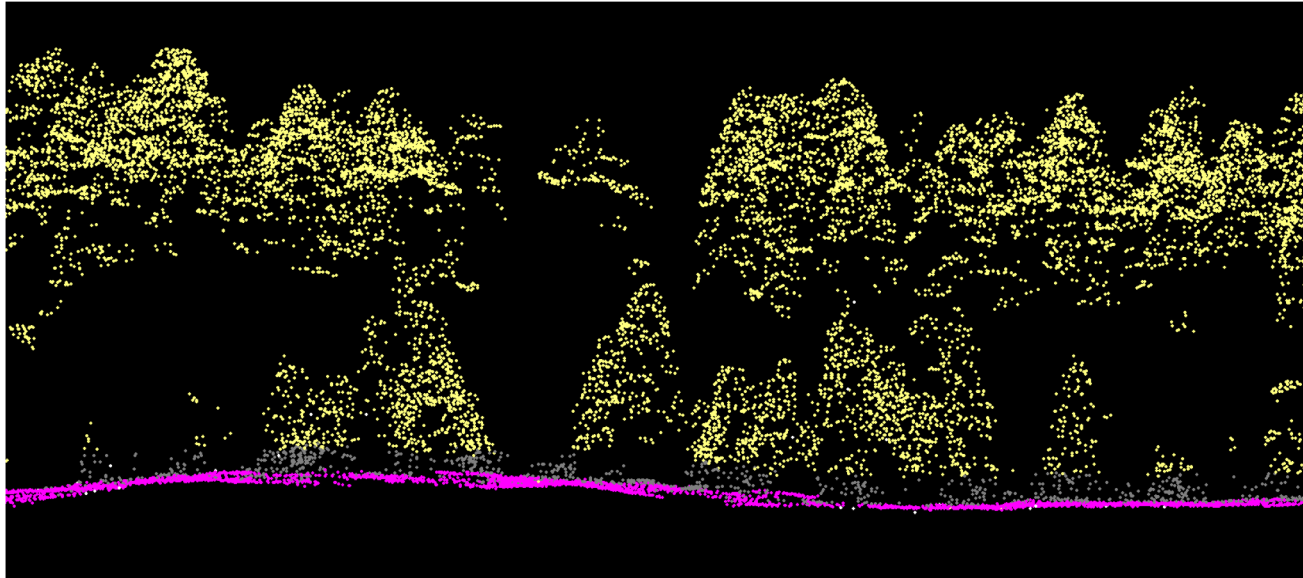
Optech Titan1064 nm  
Flight altitude: 400 m



Leica SPL100  
Flight altitude: 4500 m



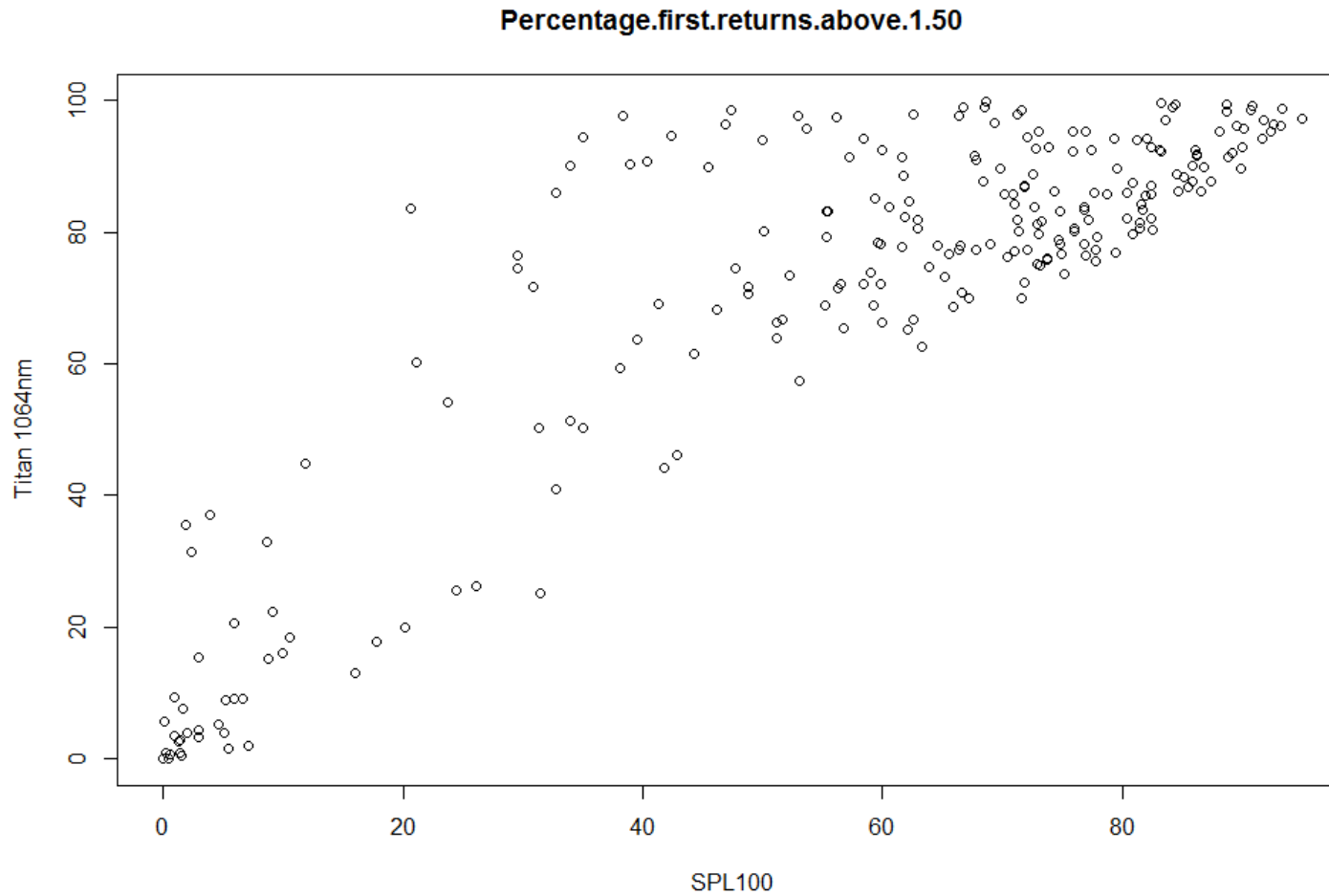
Optech Titan1064 nm  
Flight altitude: 400 m



Leica SPL100  
Flight altitude: 4500 m

# Commonly used metric for canopy density

Note that the Titan scanner are saturated earlier then the SPL100



# Ideas of future projects

- Very high density LIDAR
- Growth
  - Time series of 3D data, LAI, site properties
- Change detection
- Tree species
  - Phenology from Time series of Sentinel 2



# Arvid Axelsson

## *Tree species classification*

- Remote sensing data
  - ALS
  - Sentinel-2
  - Whatever else I can find