

# ParkLIV

**- a new green space management approach  
to inclusion**



**Thomas B. Randrup**  
Professor  
Swedish University of Agricultural Sciences



**VINNOVA**

# Equal accessibility - Not just about physical accessibility

## SDG11 - Sustainable Cities and Communities,

Pointing out four broad target groups; women, children, elderly and people w. disabilities

**TARGET 11-7**

**PROVIDE ACCESS TO SAFE AND INCLUSIVE GREEN AND PUBLIC SPACES**

**TARGET 11-A**

**STRONG NATIONAL AND REGIONAL DEVELOPMENT PLANNING**





## **Equity via involvement in public space management**

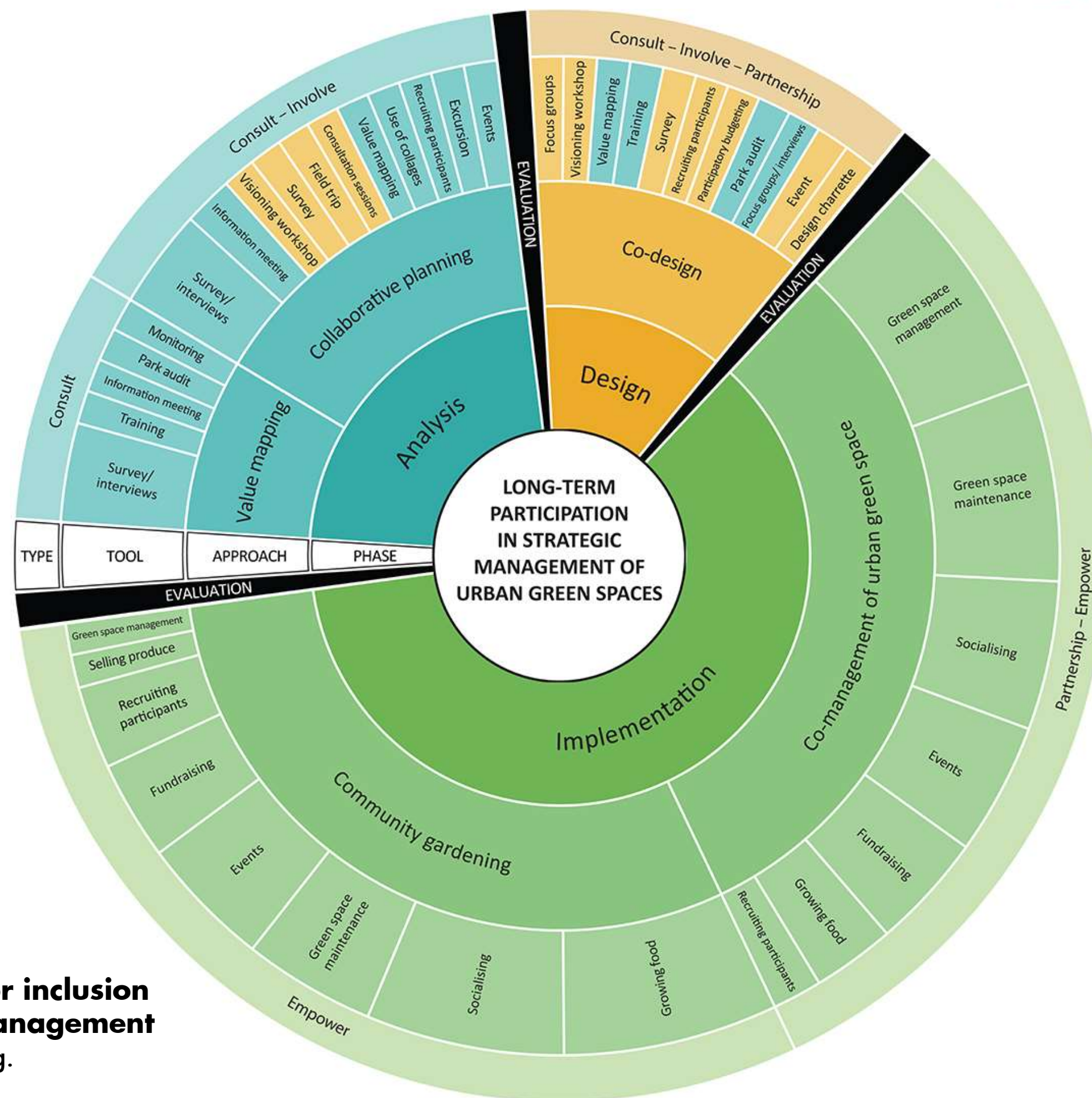
**A challenge to engage** (Arnstein, 1969; ..... Randrup et al., 2017; 2021)

(from tokenism to self-management – managers wants to, but finds it challenging)

**Public space managers are crucial in defining involvement processes** (e.g., Castell, 2010)

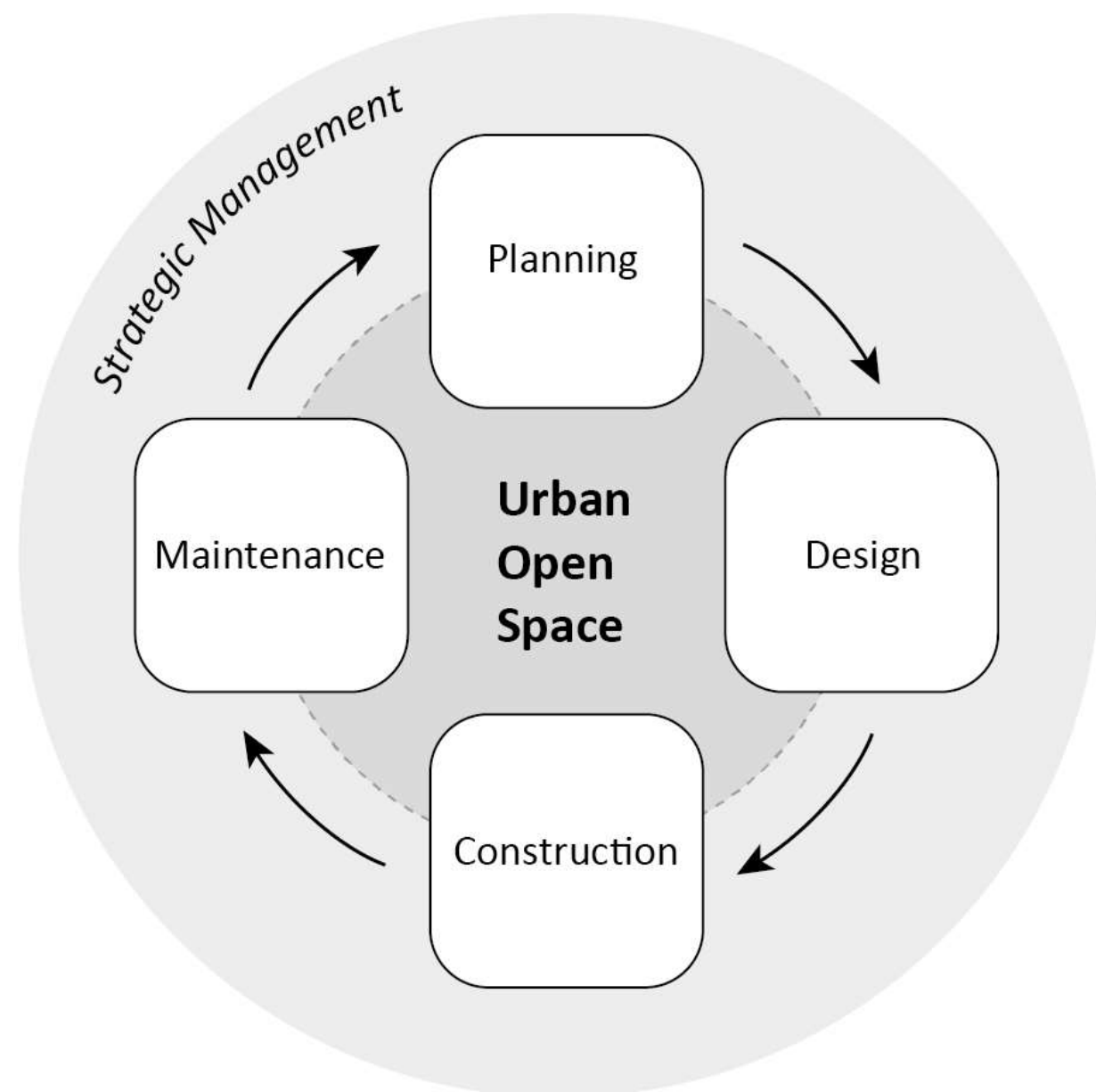
**Involvement processes are often project bound - being limited to time and resources**

# How are local governments involving users today?



Fors, H., F.Aa, Hagemann, Å.O. Sang & T.B. Randrup (2021) **Striving for inclusion - A systematic review of long-term participation in strategic management of urban green spaces.** Front. in Sust. Cities, Section Urban Greening.

# (UF) Management definitions - as long-term approaches



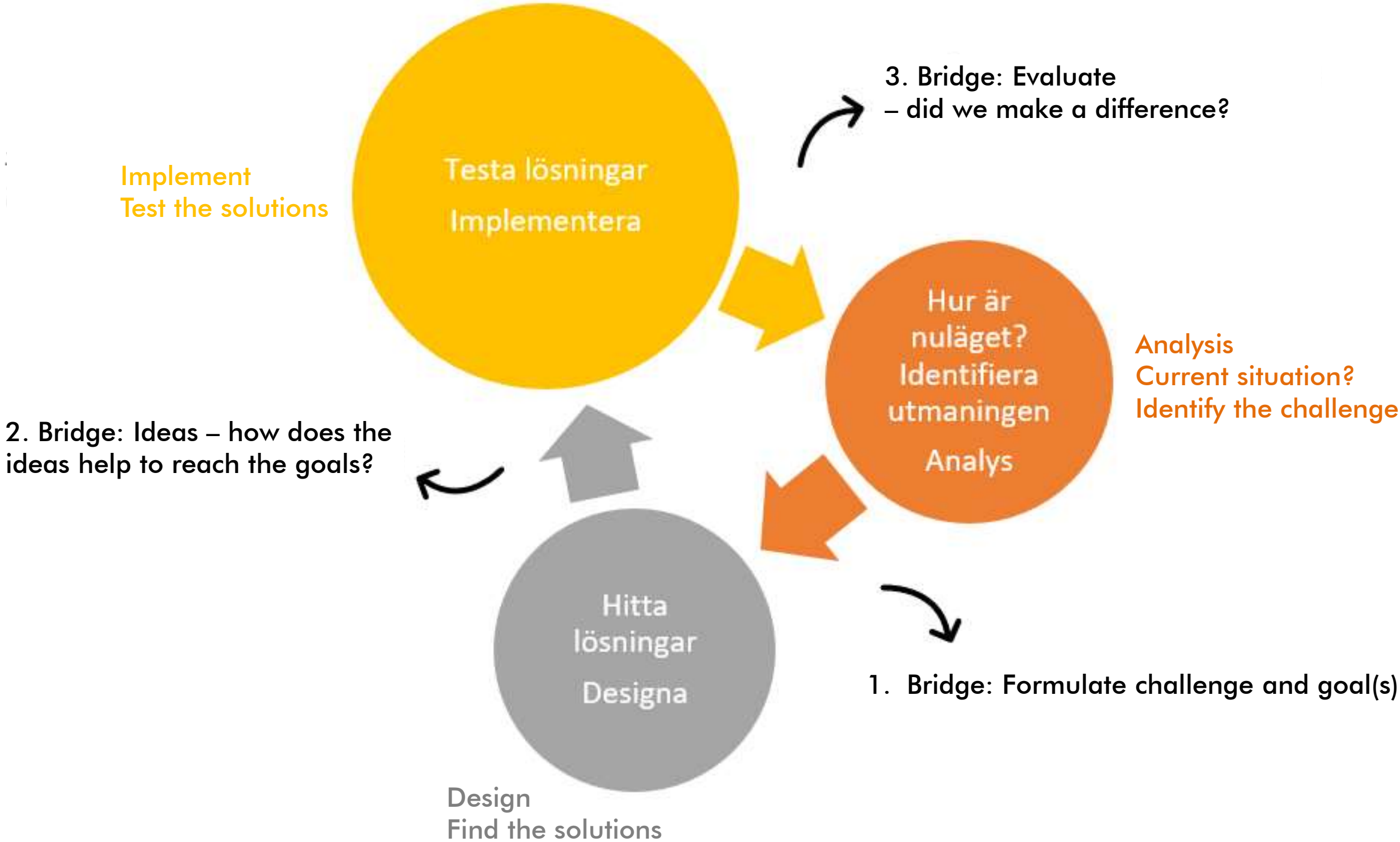
Jansson, et al. (2019) **The Governance of Landscape Management: New Approaches to Urban Space Development.** Landscape Research

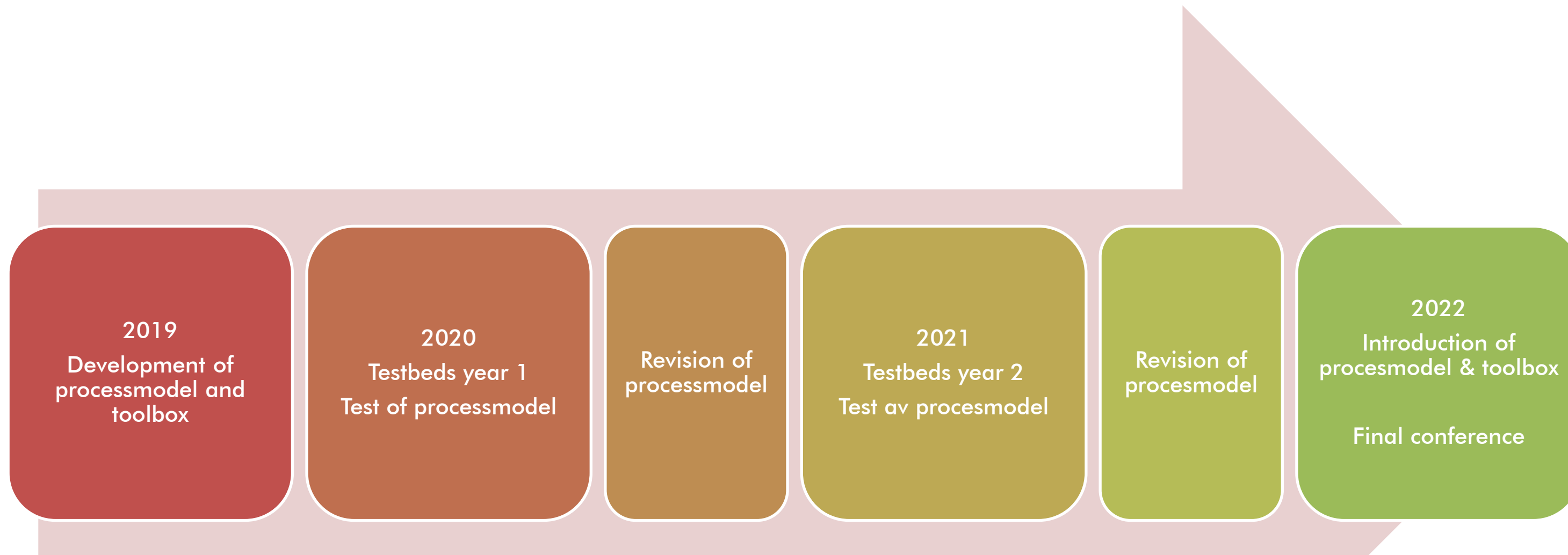


Kavacs et al. (2014) **Saker Falcon Falco cherrug Global Action Plan.** CMS Raptors MOU Technical Publication No. 2, CMS Technical Series No. 31.



# Processoriented toolbox







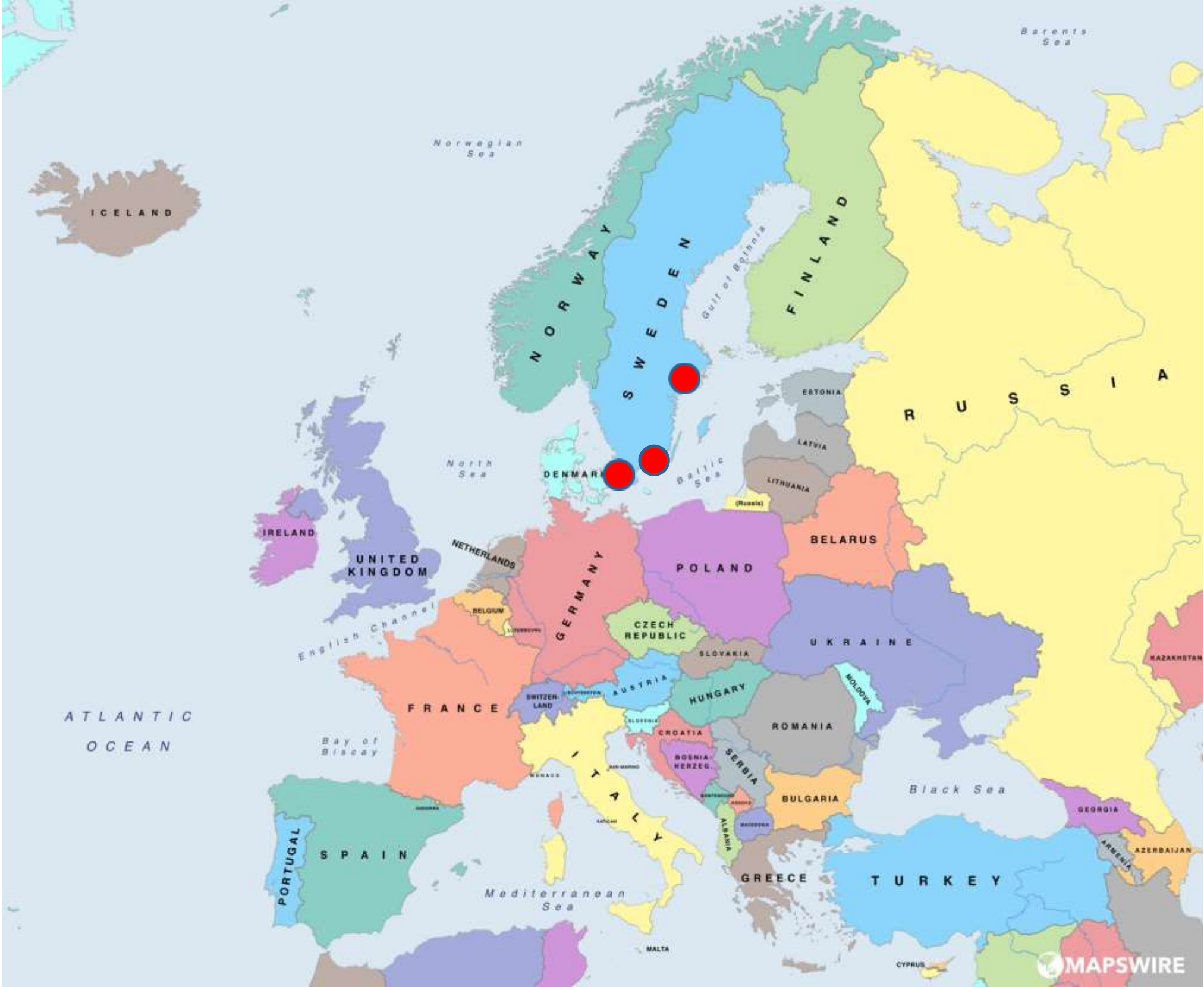
## The tested tools:

- Analysis of place qualities
- On-site interviews
- Park-walks
- Park-walks with children
- Design workshop
- Events
- Temporary solutions





# Three Swedish Test Beds





# Tyresö

## Involving School Children

Smaller interventions established by the City of Tyresö, in cooperation with local schools and the Green Space Management Dept.

The path has been tested and re-adjusted.



Bilder från Tyresö testbädd – Lilla naturstigen



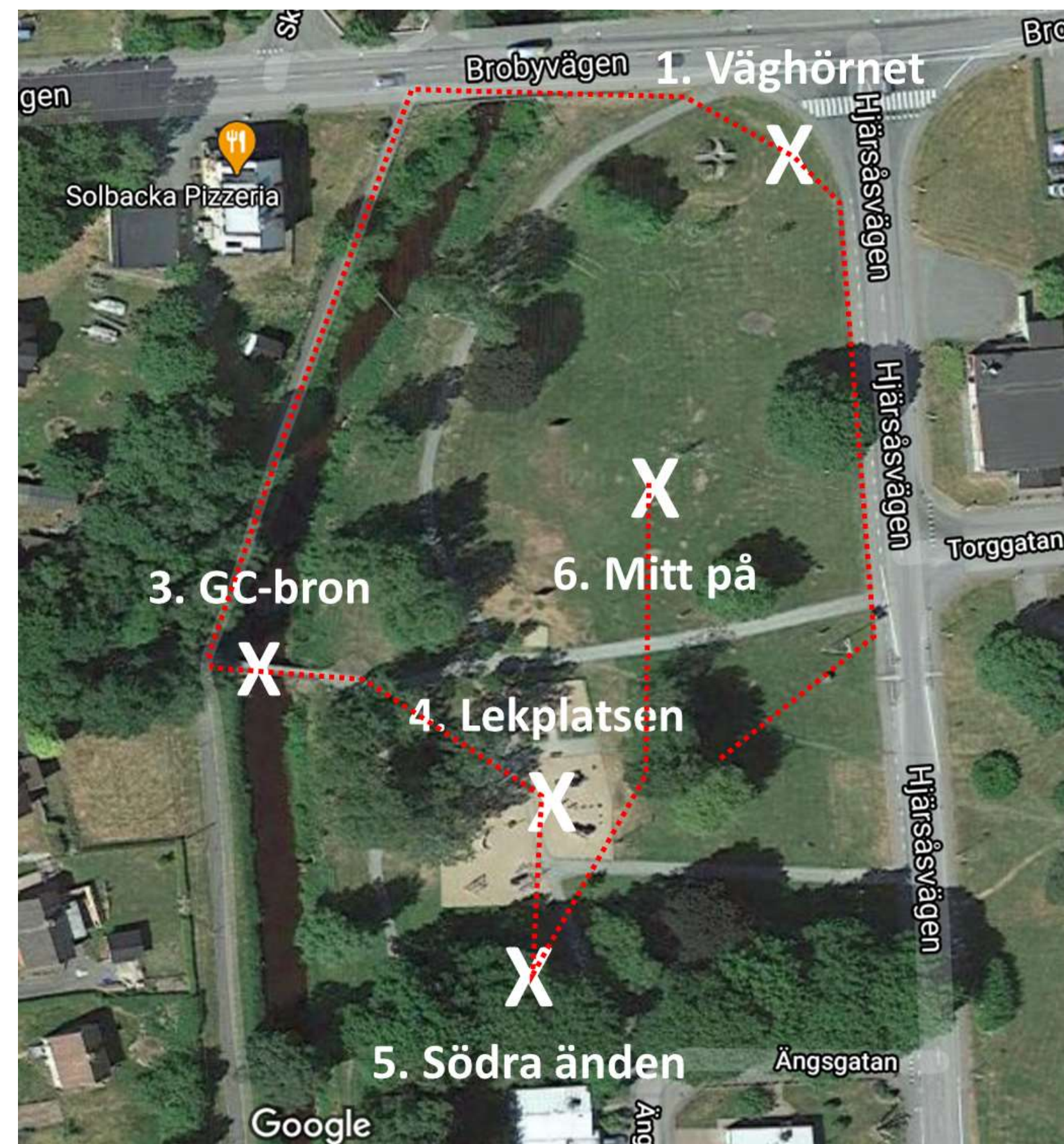


# Östra Göinge

## Involving the local community

Numerous smaller interventions agreed between the City of Östra Göinge, local residents, and local school children.

Establishment on hold due to toxic soils.



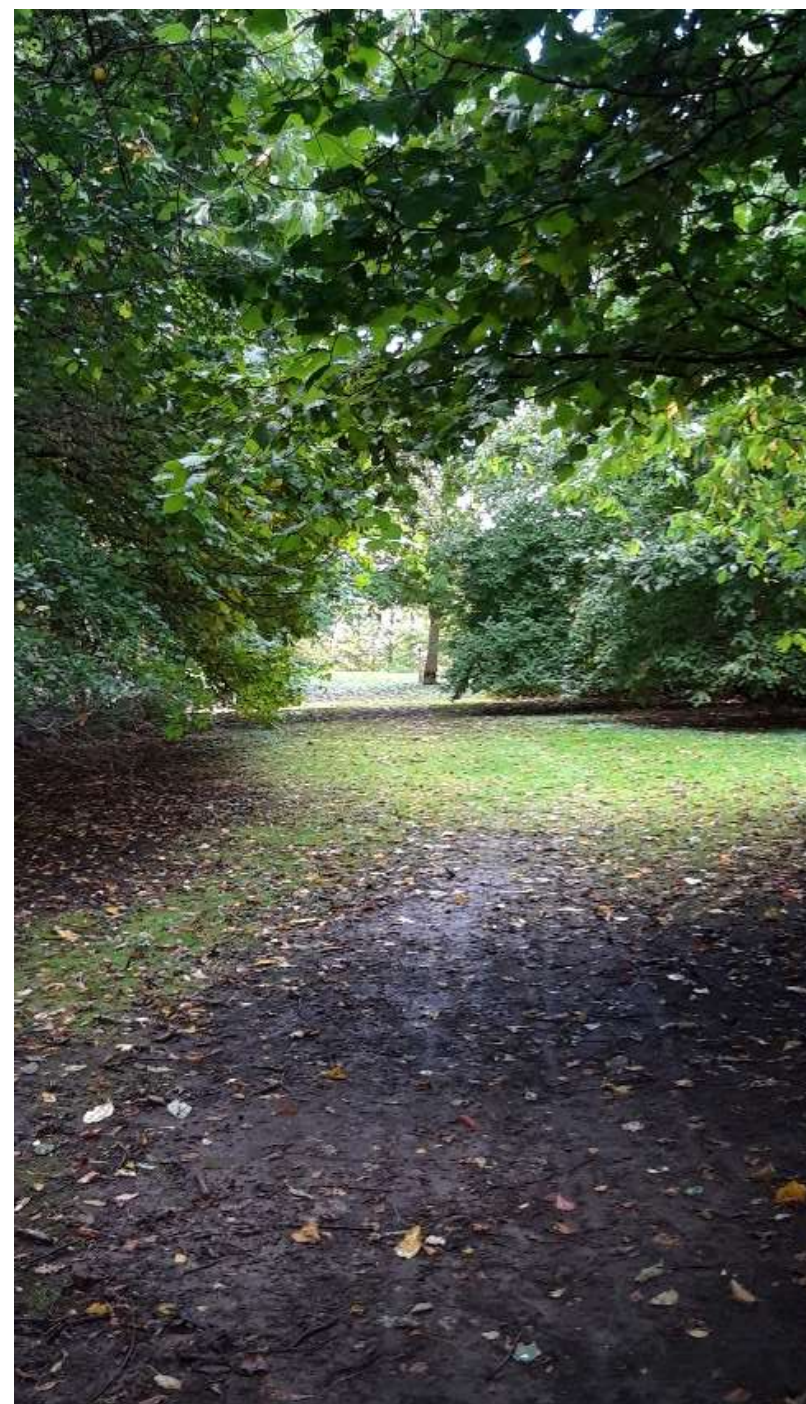


# Malmö

## Involving people with autism

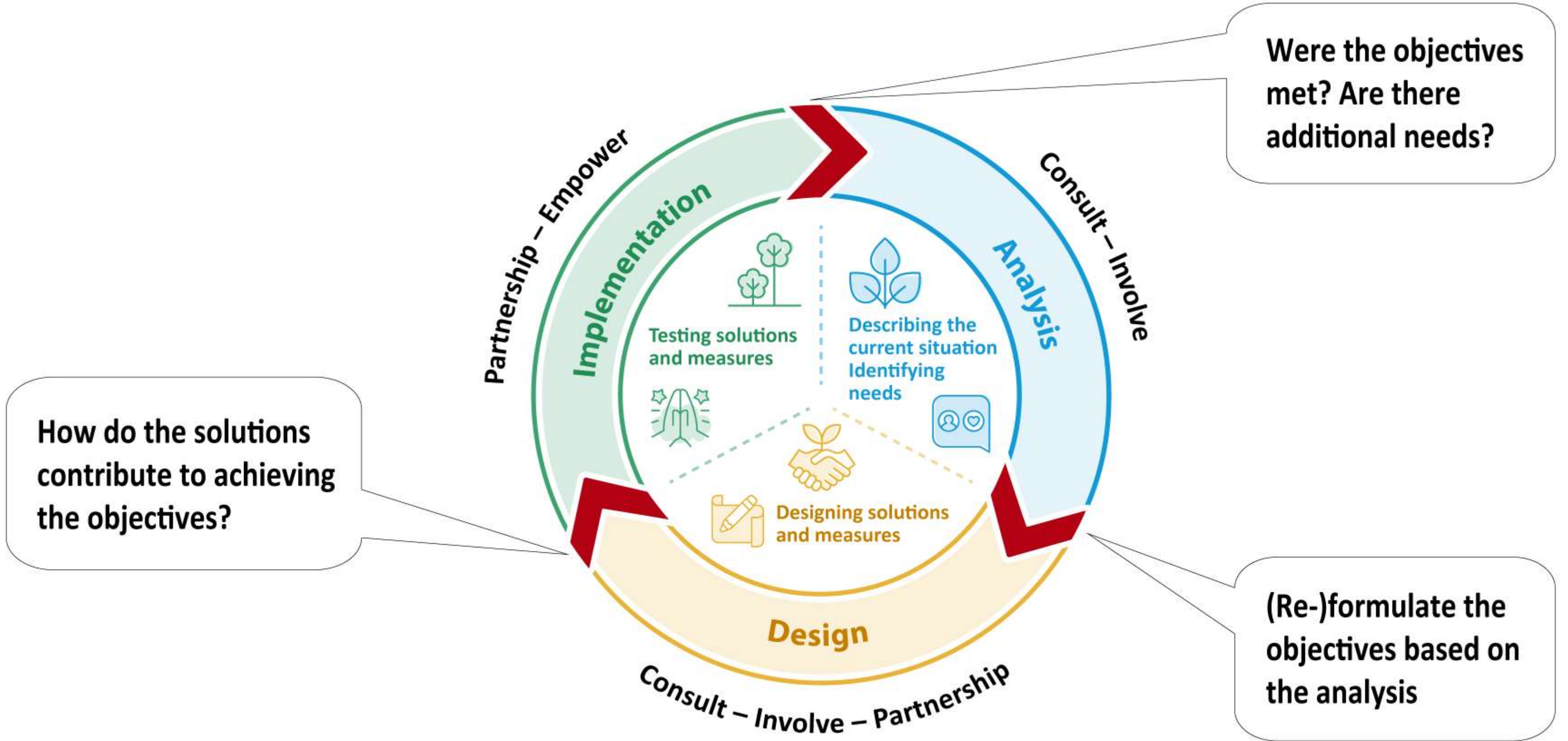
Path established by the City of Malmö, in cooperation between the Disability Dept. and the Green Space Man. Dept. for people with autism.

The path is now being tested and re-adjusted.





# The ParkLIV process model



# Conclusions

## **ParkLIV is a process**

- not a project

## **Present a framework**

– not a plan

## **Keep it simple**

– tools, events, short time, quick results

## **Evaluate on a running basis**

## **To re-prioritize time**

- is the main investment

## **Identify a project owner / a Bridge Builder**

## **It takes time to establish relations**

- but this is a long-term investment

## **Easier if policy exist**



# Three European Test Beds



natur



Driving Urban Transitions

Swedish Uni of Agricultural Sciences  
Wageningen University, NL  
Urban Planning Institute of Slovenia

Tyresö (S)  
Den Bosch (NL)  
Velenje (SL)

Living Cities & Communities, LCC  
European Knowledge Network, EUKN

**ParkLIV – engaging non-users in green space management**

T. B. Randrup<sup>a</sup>, H. Fors<sup>a</sup>, Å. O. Sang<sup>a</sup>, B. Persson<sup>b</sup>, J. Björstad<sup>c</sup>, E. Shepherdson<sup>c</sup> and H. Nolmark<sup>c</sup>

<sup>a</sup>Department of Landscape Architecture, Planning and Management, Swedish University of Agricultural Sciences, Alnarp, Sweden; <sup>b</sup>Landskaparkitekterna i Lund AB, Lund, Sweden; <sup>c</sup>Living Cities and Communities, Stockholm, Sweden

**ABSTRACT**

Everyone has the right to feel welcome, safe and be able to access public green spaces without fear, anxiety or stress. However, the term "accessibility" is primarily used in relation to physical accessibility, while social and cultural dimensions of accessibility to urban public green spaces remains underexplored. Methods and tools for universal design and management that also meets the needs of marginalised groups, are needed. This requires involvement of both users and potential users through participatory methods, building on individual needs and perspectives. In Sweden, traditionally marginalised groups and non-users are rarely engaged in the development of public urban green spaces. Local governments may have the will, but lack resources and appropriate methods in order to do so. Research has recently described a further engagement of users as an unleashed potential in relation to planning and management of urban green spaces. Based on the study of three test beds and the use of public green space governance and

**ARTICLE HISTORY**

Received 29 September 2023  
 Accepted 22 March 2024

**KEYWORDS**

Involvement; process model; marginalised groups; local governments

# Thank you

Emma Shepherdson, Hanna Fors, Jennie Björstad, Bengt Persson, Åsa Ode Sang & Henrik Nolmark  
 + Municipalities Malmö, Tyresö & Östra Göinge

[www.livingcities.se/parkliv.html](http://www.livingcities.se/parkliv.html) [in Swedish]

Randrup et al. (2024) **ParkLIV – Involving non-users in green space management.**  
*Local Environment. The International Journal of Justice and Sustainability* - 10.1080/13549839.2024.2353046