

ARTRAPPORTER

ING - NU, DÅ

OCH I FRAMTIDEN

PAV JOHNSON



Acerbia alpina (Quensel, 1802) Nordisk igelkottspinnare

Acerbia alpina (Quensel in Acerby, 1802)

ACERBI, J., 1802: *Travels through Sweden, Finland and Lapland, to the North Cape 1798 & 1799* **2**: 1-380, pl. I-III, London.



TO THE
NORTH CAPE,

IN
THE YEARS 1798 AND 1799.

Giuseppe
BY JOSEPH ACERBI. 1773

Sistimus hic tandem, nobis ubi deficit orbis.

IN TWO VOLUMES.

ILLUSTRATED WITH SEVENTEEN ELEGANT ENGRAVINGS.

VOL. II.

LONDON:

PRINTED FOR JOSEPH MAWMAN, IN THE POULTRY

SUCCESSOR TO MR. DILLY.

1802.

By T. Gillies, Salisbury Square.

PLATE I.

1. *Sirex Nigricornis* : niger—abdomine luteo, basi nigro ; pedibus quatuor anterioribus flavescens.
2. *Apis Alpina* : nigra—abdomine fulvo, basi nigro.
3. *Apis Lapponica* : flava—capite, fasciâ thoracis mediâ, antennis, pedibusque, nigris ; abdomine basi fulvo, apice albido.
4. *Bombyx Alpina* : alis superioribus nigris, flavo maculatis ; inferioribus coccineis, basi fasciisque macularibus concatenatis atris.
5. *Noctua Alpicola* : alis superioribus cinereis, fasciis strigisque undulatis obscurioribus ; inferioribus fuscis, lunulâ margineque albis.
6. *Noctua Alpicola* : underfide.
7. *Apis Arctica* : nigra—thorace anticè posticèque fulvo, abdomine supra fasciis flavis fulvisque.

PLATE II.

1. *Papilio Emilia* : alis superioribus fuscis, lunulâ mediâ fulvâ, inferioribus dentatis, supra lutescens, nigro-maculatis, infra virescentibus, maculis circiter sedecim rotundis argenteis.
2. *Papilio Emilia* : underfide.
3. *Leptura Spadicea* : fusca, obscura, clytris piccis.

4. *Leptura*

Ölands fåglar



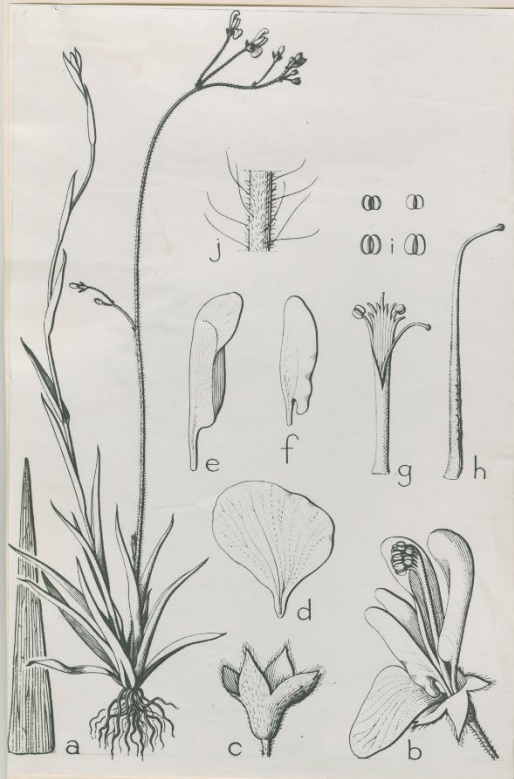
Sveriges Ornitologiska Förening – BirdLife Sverige

huvudredaktör Päv Johansson









TYPE!
Papilionopsis stylodioides Steen.

Inflorescence is *Desmodium repandum* (Vahl) DC. and foliage is *Burmannia disticha* L.
Det. ~~C. G. G. J. van Steenis~~ W. Meenii N. 19.7.6...

Revised for Flora Malesiana
Papilionopsis stylodioides Steen n. sp. n. sp.
New Guinea. Central Mts. Swart Valley, Kadubaka, 1600-2000 m. Dagny Bergman 25.3.58
det. C. G. G. J. van Steenis 109 Herb. Stockholm



TYPE!
Papilionopsis stylodioides Steen.

The inflorescence is:
Desmodium repandum (Vahl) DC.
determ. H. Ohashi 17 July 1995



PLANTS OF NETHERLANDS NEW GUINEA

287: *Papilionopsis stylodioides* Steen. n. sp. n. sp.

Central Mountains: Swart Valley, Kadubaka, 1600-2000 m.

Steenii 14/1959

25.3. 1958.

Leg. Dagny Bergman

Herbarium Number
S-G-4545



Rungtich del.

Desmodium strangulatum (W. & A.)

Dumphy Lith.

An aerial photograph of a rural landscape. In the center, a school building with a dark roof and a small tower is surrounded by trees. The surrounding area is divided into large, rectangular fields, some of which are golden-brown, suggesting they have been harvested. A road runs horizontally across the bottom of the image, with a few cars visible. The background shows a vast, flat expanse of land stretching to the horizon under a clear sky.

*station***Linné**

Foto: Station Linné



Foto: Station Linné



Foto: Station Linné








det. M. JASCHHOF / #192/15
Gardenforsia oelandica
JASCHHOF & JASCHHOF

SE: ÖL, Morbylånga,
St. Dalby lund NR,
mixed deciduous forest with
much dead ash,
8 June-8 July 2015,
Malaise trap, M. & C. Jaschhof

Holo-
type

CEC
01595



det. M. JASCHHOF / #192/15

Gardenforsia oelandica
JASCHHOF & JASCHHOF

Holo-
type

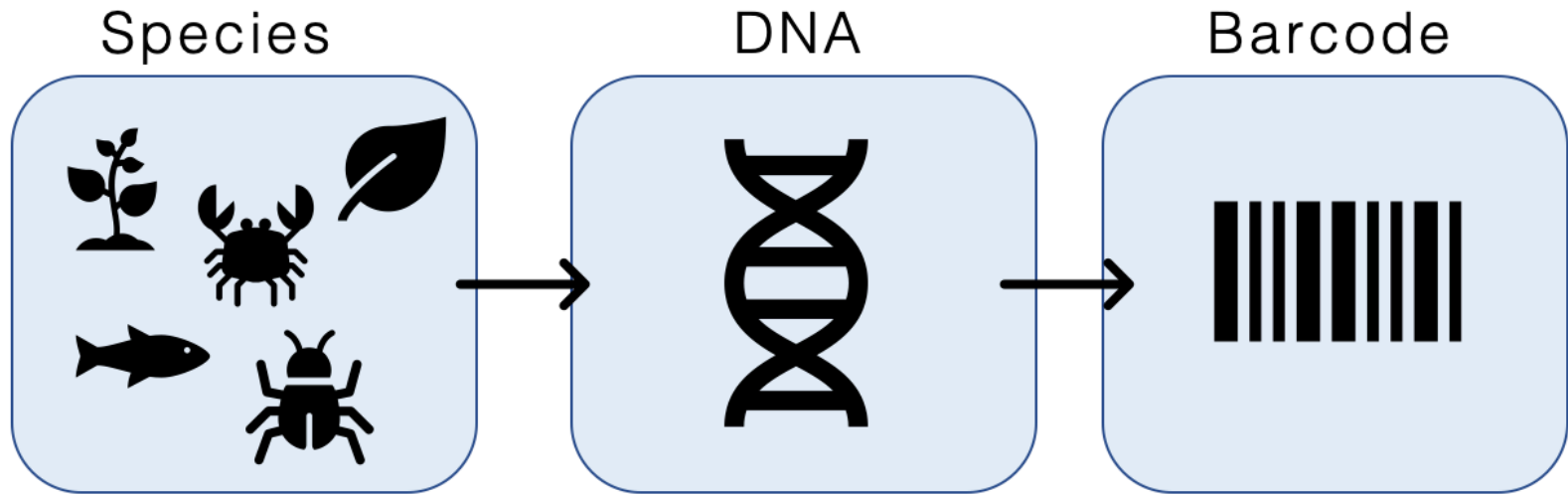
CEC
01595

SE: ÖL: Mörbylånga,
St. Dalby lund NR,
mixed deciduous forest with
much dead ash,
8 June-8 July 2015,
Malaise trap, M. & C. Jaschhof

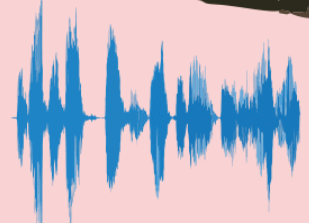
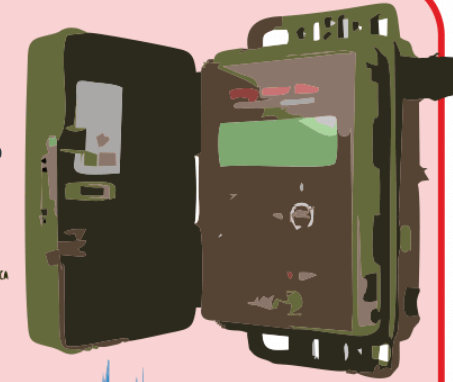
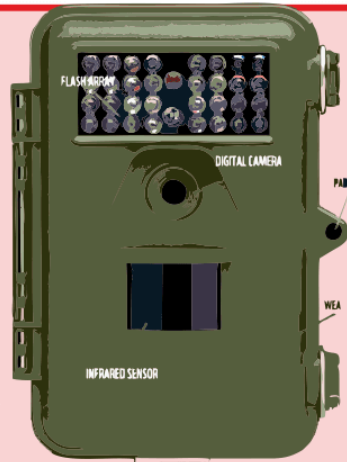
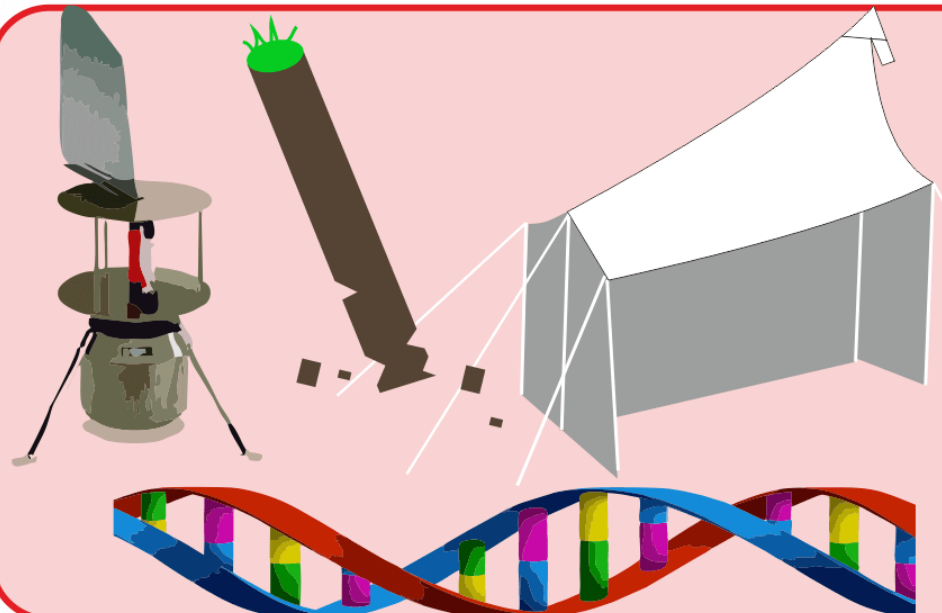
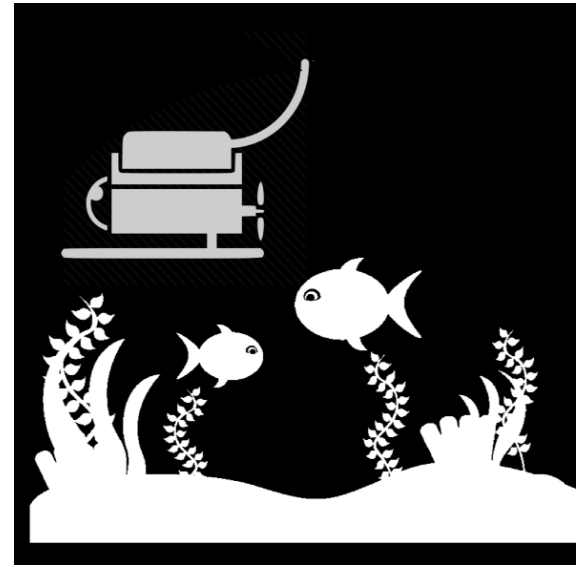
*Gardenforsia
oelandica*

Neurepidosisis

Para-



“Is the future DNA scanners that could tell an ecologist in the field whether or not an organism is a new species?”



TACK!